



MISTRA SWECIA  
CLIMATE, IMPACTS & ADAPTATION

# Framtidens klimat



Markku Rummukainen  
Mistra-SWECIA, LU, SMHI



MISTRA SWECIA  
CLIMATE, IMPACTS & ADAPTATION

# Scenarier för fram i tiden

- Klimatkänsligheten
- Kolcykeln/klimatet
- Utsläppen

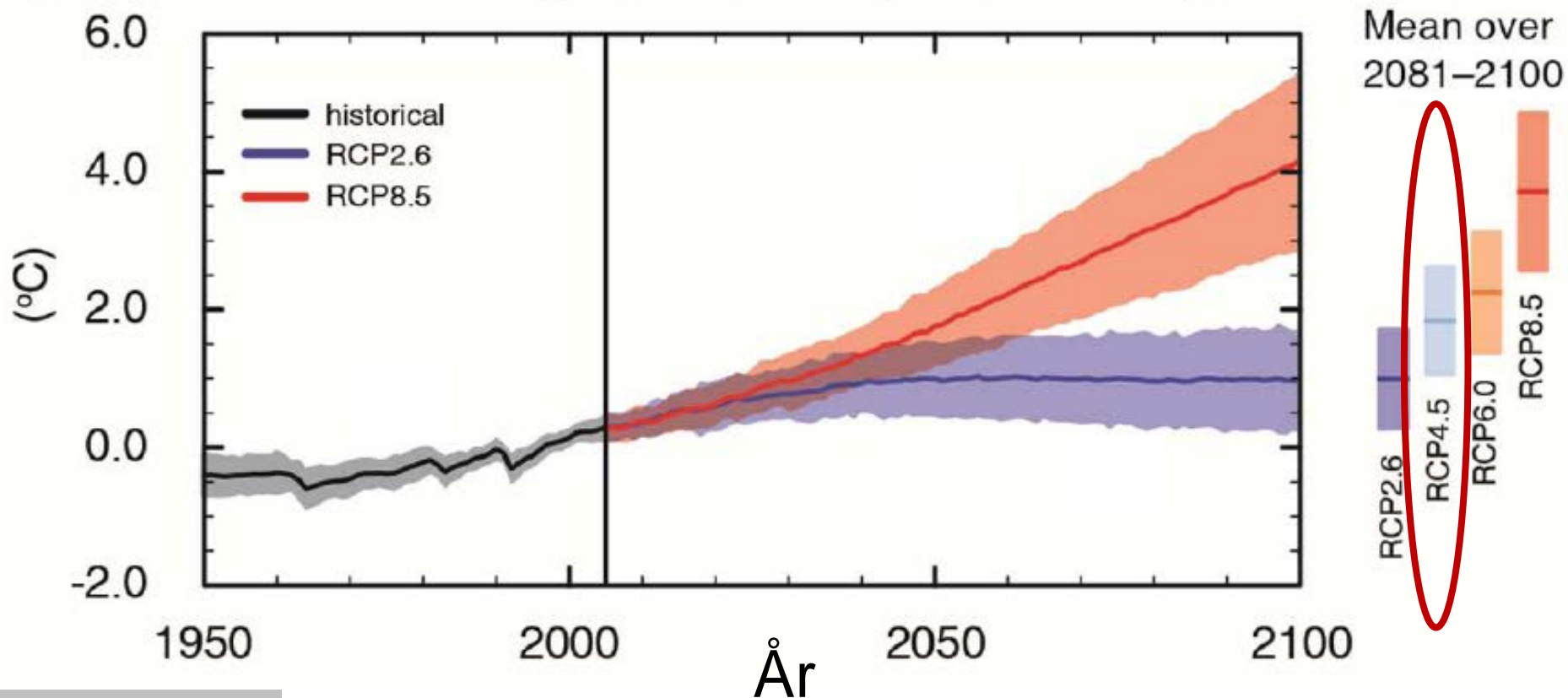


- IPCC:s AR5; RCP; CMIP5
- CORDEX



MISTRA SWECIA  
CLIMATE, IMPACTS & ADAPTATION

# Business-as-usual vs. stringent klimatpolitik

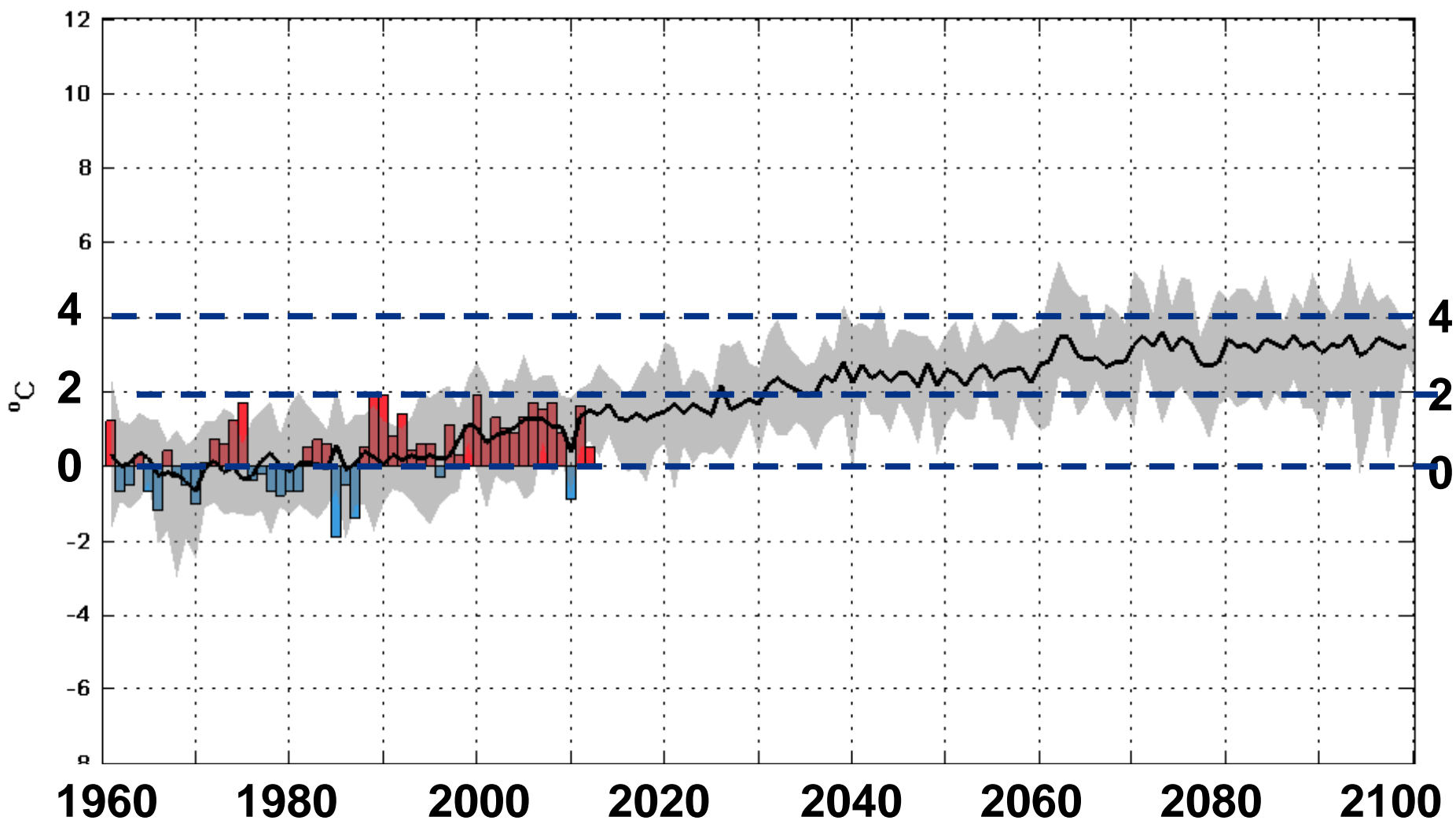


Under RCP4,5

+1,8°C (fr ca 1995)  
+2,4°C (fr 1800-talet)

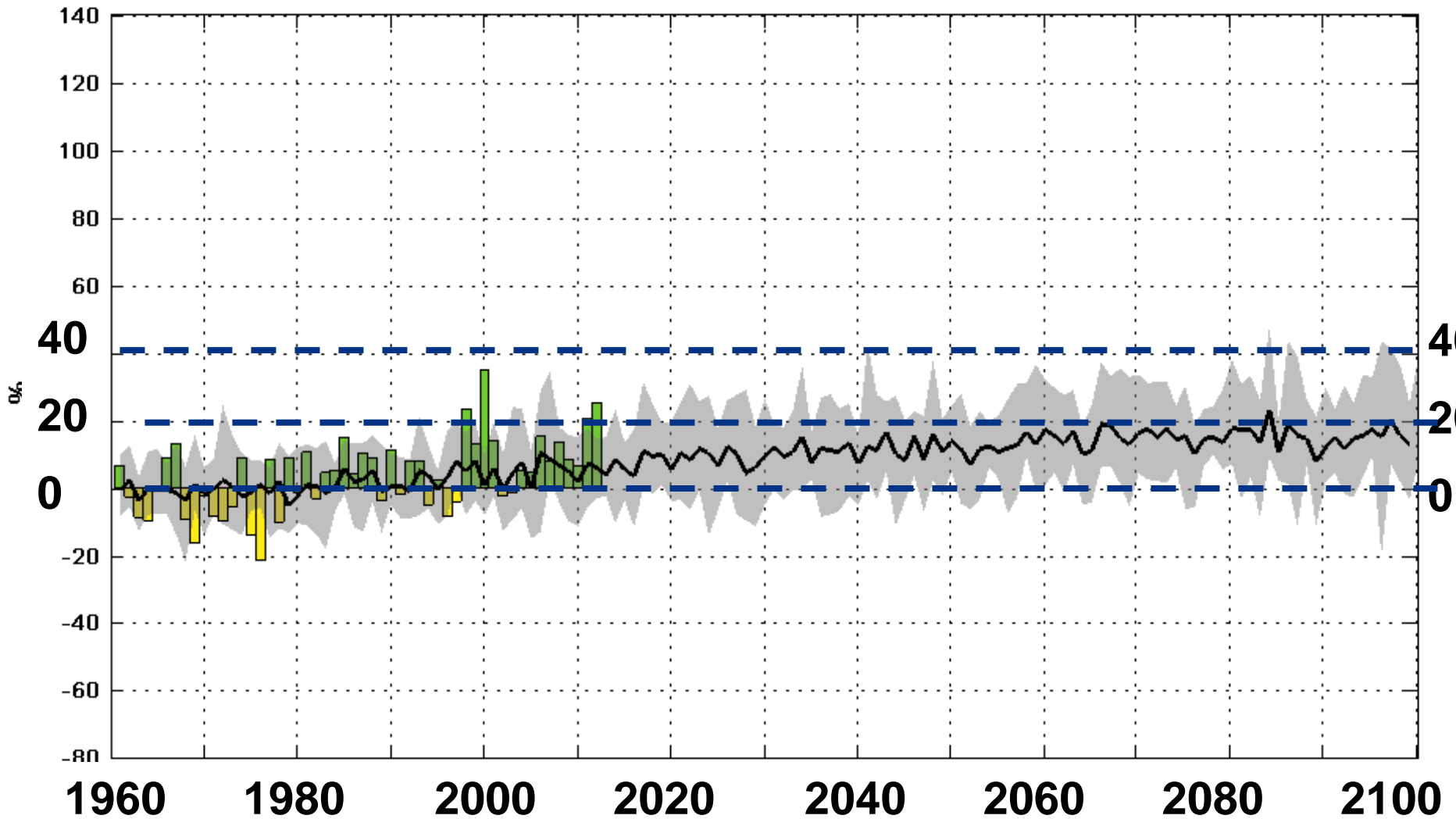


# Årsmedeltemperatur / Sverige / grader från 1961-90 / RCP4,5





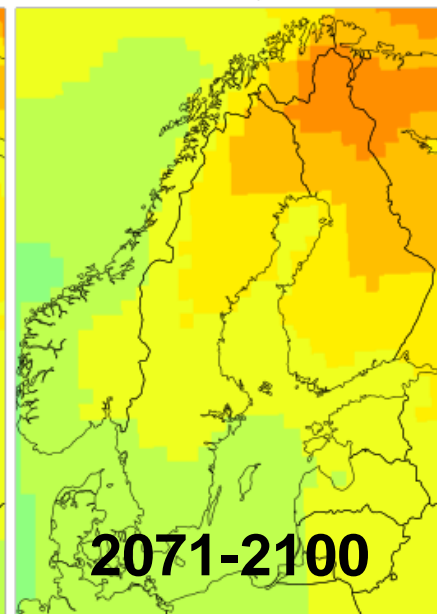
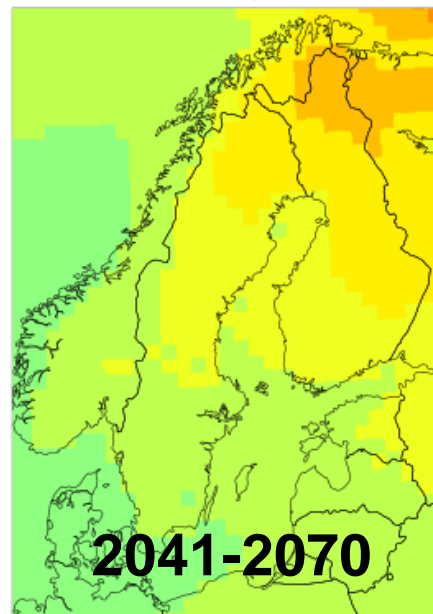
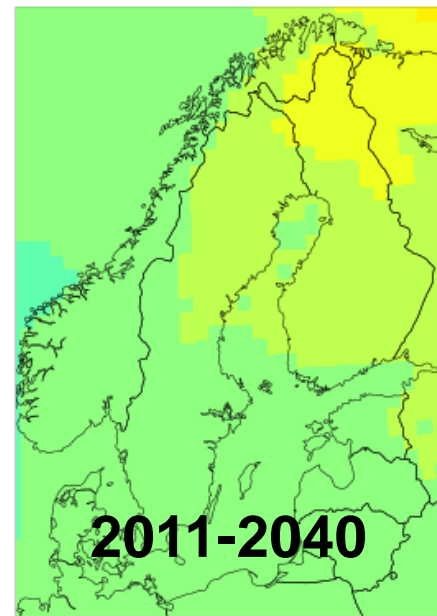
# Årsnederbörd / Sverige / % från 1961-90 / RCP4,5





MISTRA SWECIA  
CLIMATE, IMPACTS & ADAPTATION

# Temperatur Vinter RCP4,5 Rel 1971-2000



1 2 3 4 5 6 7 8 9 10 11

°C

FINANSIERAT AV  
**MISTRA**

SMHI,

<http://www.smhi.se/klimatdata/Framtidens-klimat>



MISTRA SWECIA  
CLIMATE, IMPACTS & ADAPTATION

## ”Oförändrade utsikter”

- Mildare och varmare; mer än globalt
- Mer nederbörd
- Efter hand mindre snö
- ...

