

Vegetation History and Archaeobotany

The Journal of Quaternary Plant Ecology, Palaeoclimate and Ancient Agriculture

Volume 23 · Number 3 · May 2014

Special Issue: It's all in the detail: a tribute to Hilary Birks and her contributions to palaeoecology

Editors: Anne E. Bjune · Kathy J. Willis

EDITORIAL

It's all in the detail: a tribute to Hilary Birks and her contributions to palaeoecology

A.E. Bjune · K.J. Willis 175

ORIGINAL ARTICLES

Tundra and boreal forest of interior Alaska during terminal MIS 6 and MIS 5e

N.H. Bigelow · M.E. Edwards · S.A. Elias · T.D. Hamilton · C.E. Schweger 177

Living on the good soil: relationships between soils, vegetation and human settlement during the late Allerød period in Denmark

M.F. Mortensen · P.S. Henriksen · O. Bennike 195

Tree taxa immigration to the eastern Baltic region, southeastern sector of Scandinavian glaciation during the Late-glacial period (14,500–11,700 cal. B.P.)

L. Amon · S. Veski · J. Vassiljev 207

Palynological richness and evenness: insights from the taxa accumulation curve

T. Giesecke · B. Ammann · A. Brande 217

Late glacial and Holocene environmental changes inferred from sediments in Lake Myklevatnet, Nordfjord, western Norway

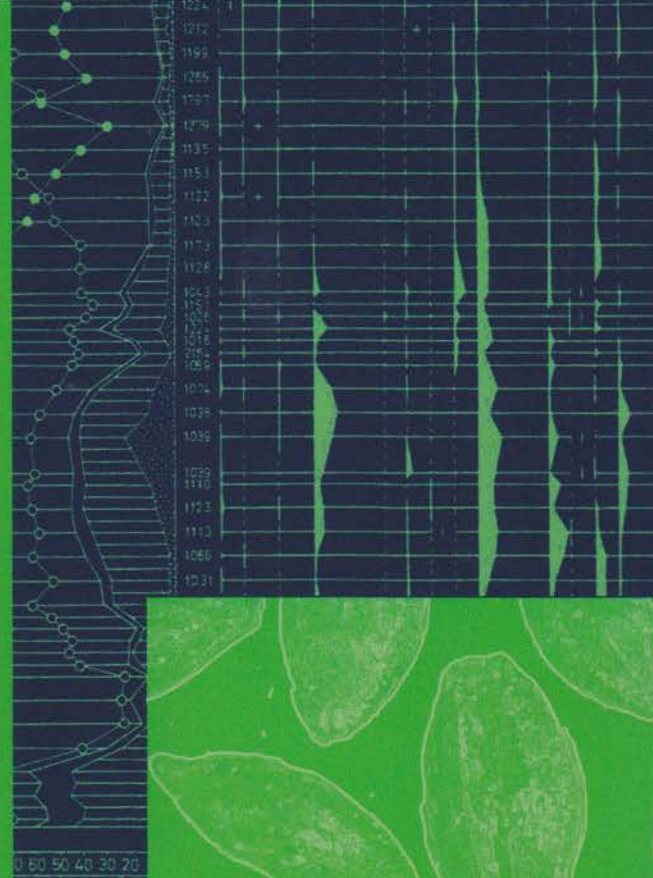
A. Nesje · J. Bakke · S.J. Brooks · D.S. Kaufman · E. Kihlberg · M. Trachsel · W.J. D'Andrea · J.A. Matthews 229

The potential of stomata analysis in conifers to estimate presence of conifer trees: examples from the Alps

B. Ammann · W.O. van der Knaap · G. Lang · M.-J. Gaillard · P. Kaltenrieder · M. Rösch · W. Finsinger · H.E. Wright · W. Tinner 249

Representation of aquatic vegetation change by plant macrofossils in a small and shallow freshwater lake

G.H. Clarke · C.D. Sayer · S. Turner · J. Salgado · S. Meis · I.R. Patmore · Y. Zhao 265



Roman impact on the landscape near castellum Fectio, The Netherlands

V. van den Bos · O. Brinkkemper · I.D. Bull · S. Engels · T. Hakbijl · M. Schepers · M. van Dinter · G. van Reenen · B. van Geel 277

After 8 years of annual pollen trapping across the tree line in western Norway: are the data still anomalous?

A.E. Bjune 299

Challenges in the presentation and analysis of plant-macrofossil stratigraphical data

H.J.B. Birks 309

SHORT COMMUNICATION

First records and potential palaeoecological significance of *Dianella* (Xanthorrhoeaceae), an extinct representative of the native flora of Rapa Nui (Easter Island)

N. Cañellas-Boltà · V. Rull · A. Sáez · M. Prebble · O. Margalef 331

Further articles can be found at link.springer.com

Instructions for Authors for *Veget Hist Archaeobot* are available at www.springer.com/00334