

# Näringsämnen från källa till hav

Lars Sonesten  
Institutionen för vatten och miljö

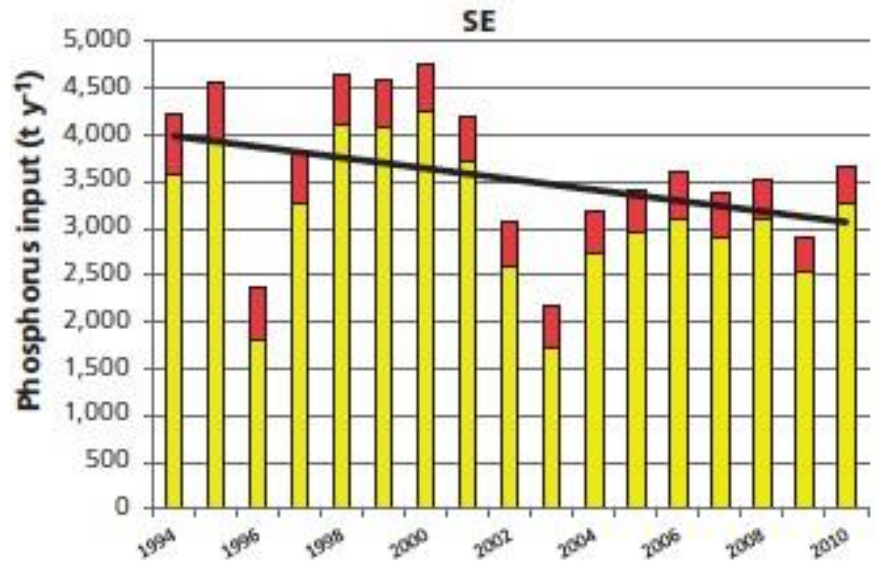
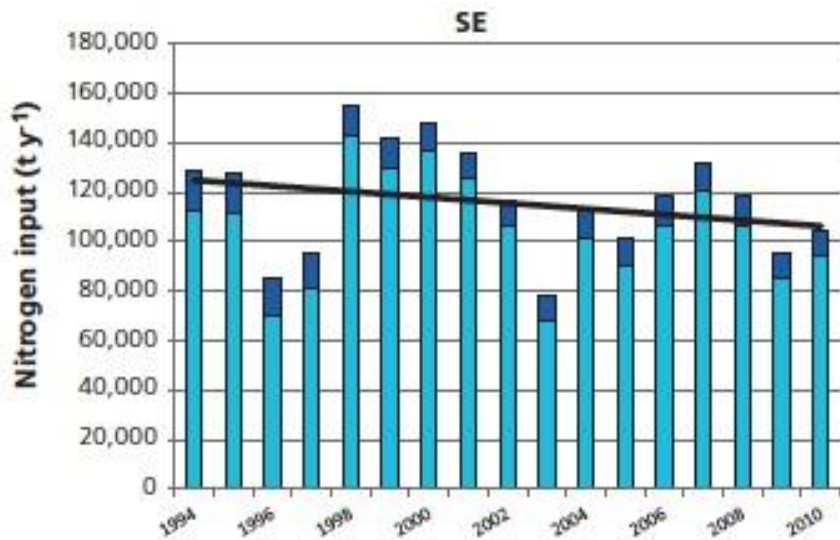


# Totala N och P belastningen

## Flödesnormaliserad inkl direktutsläpp

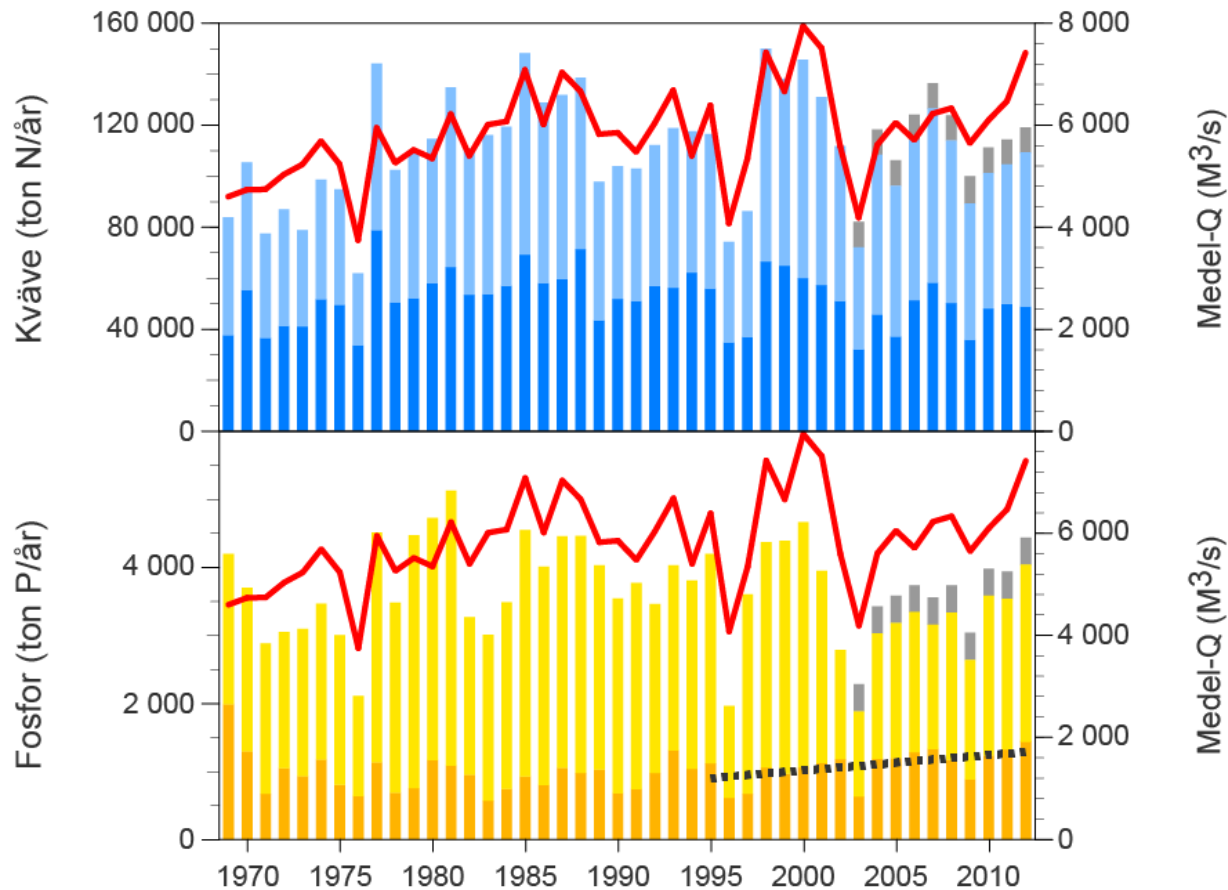


PLC5.5

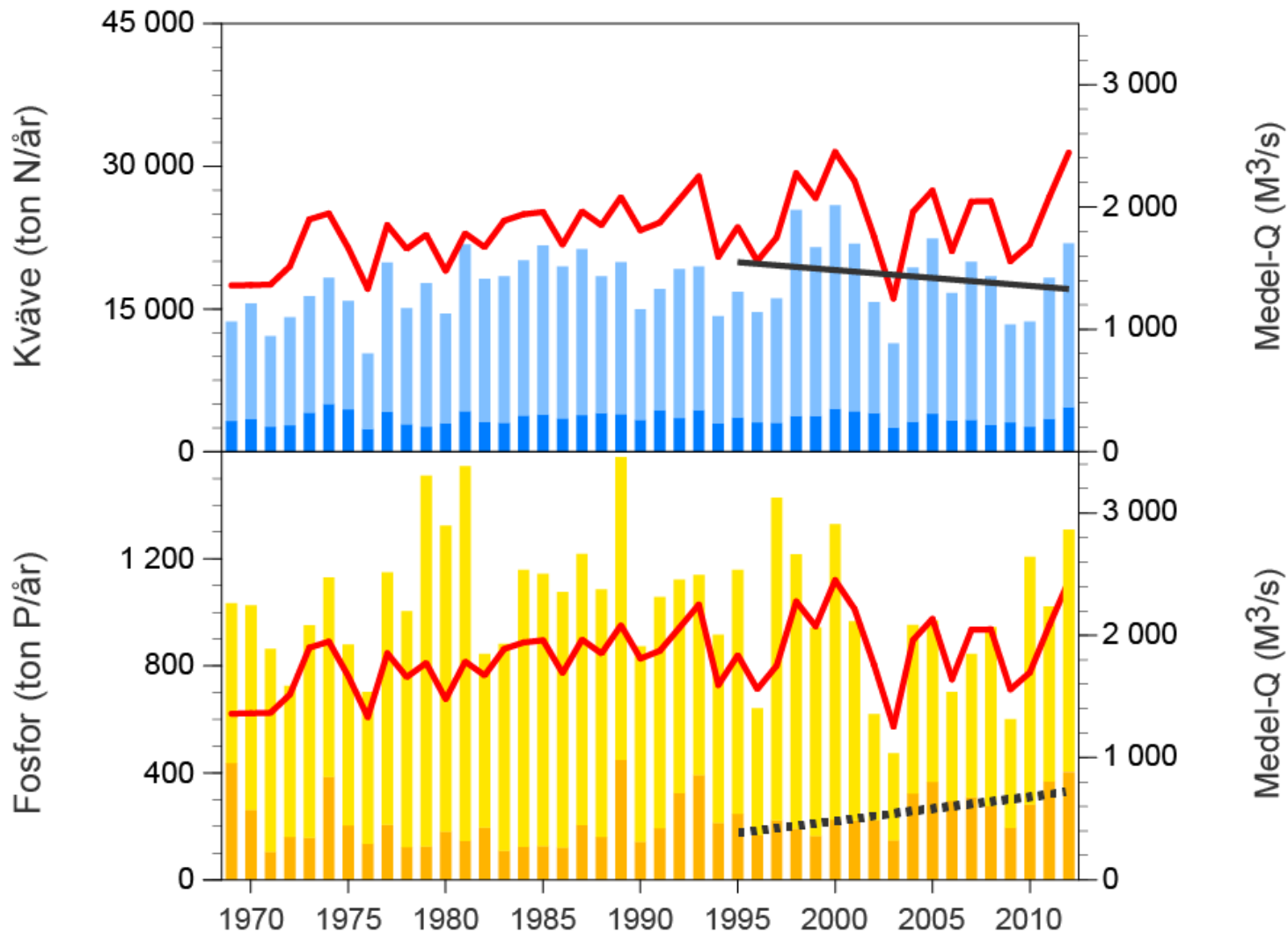


# N och P belastningen 1969-2012

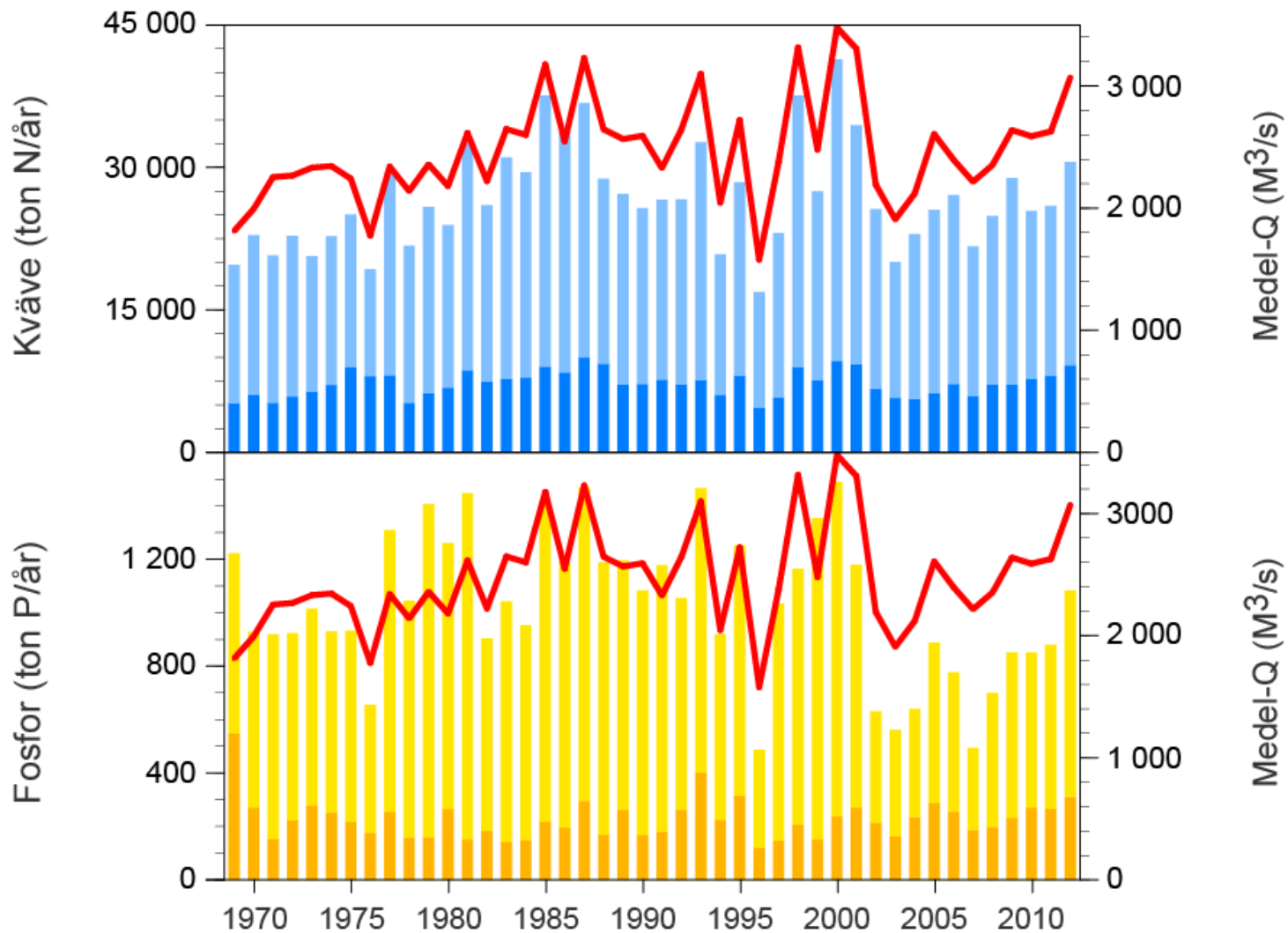
Hela landet – ej flödesnormaliserat



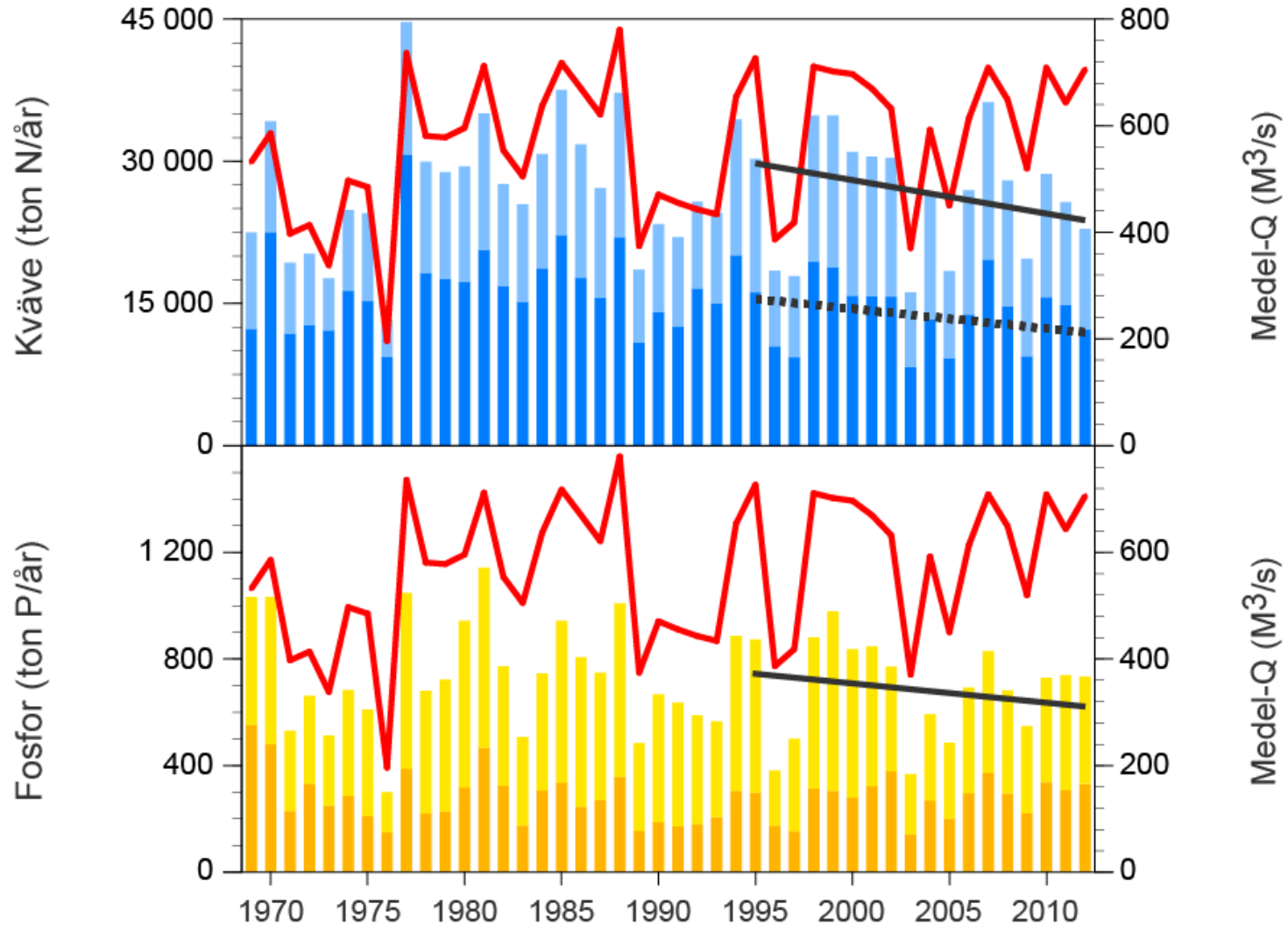
# Bottenviken 1969-2012



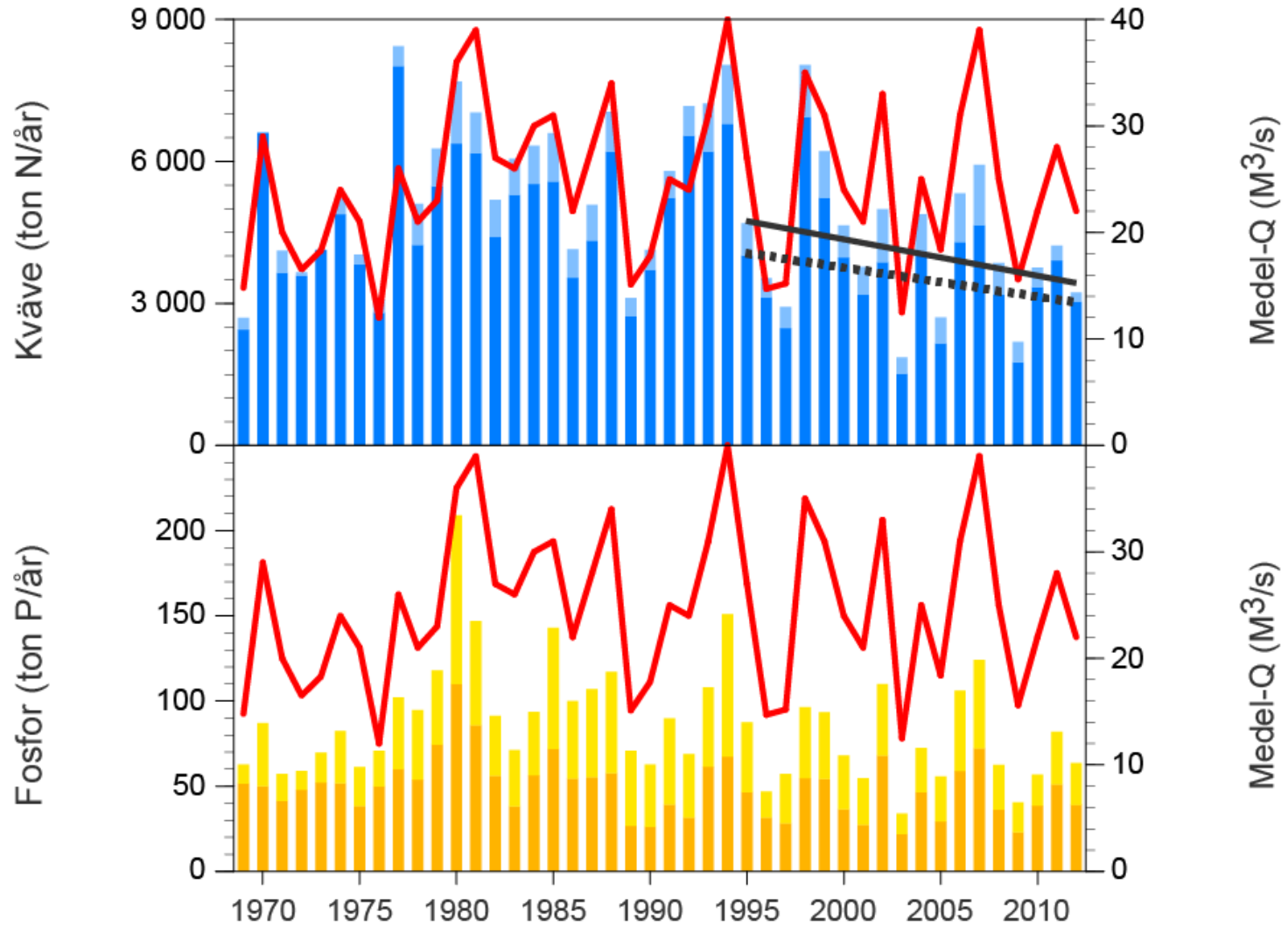
# Bottenhavet 1969-2012



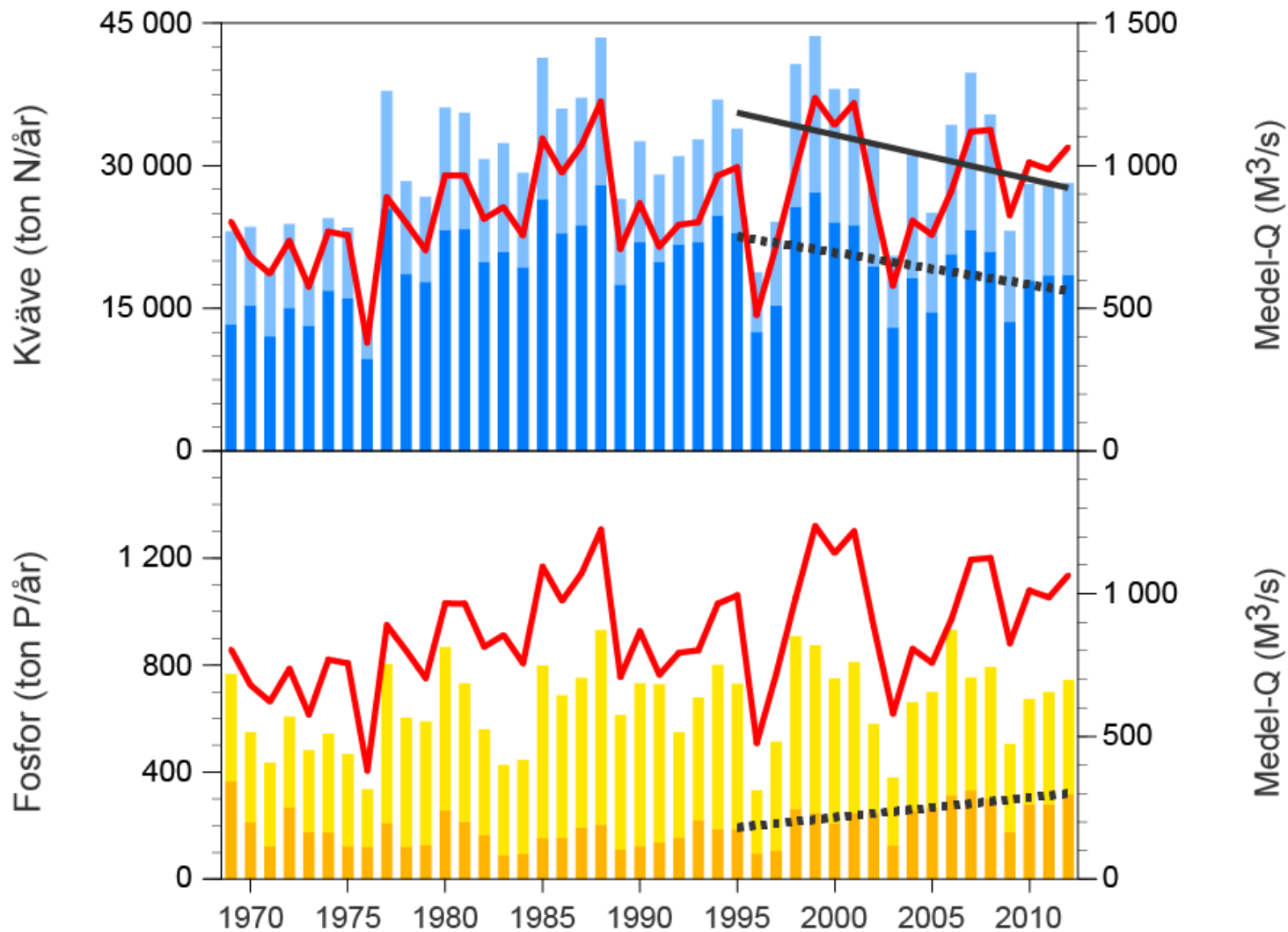
# Egentliga Östersjön 1969-2012



# Öresund 1969-2012

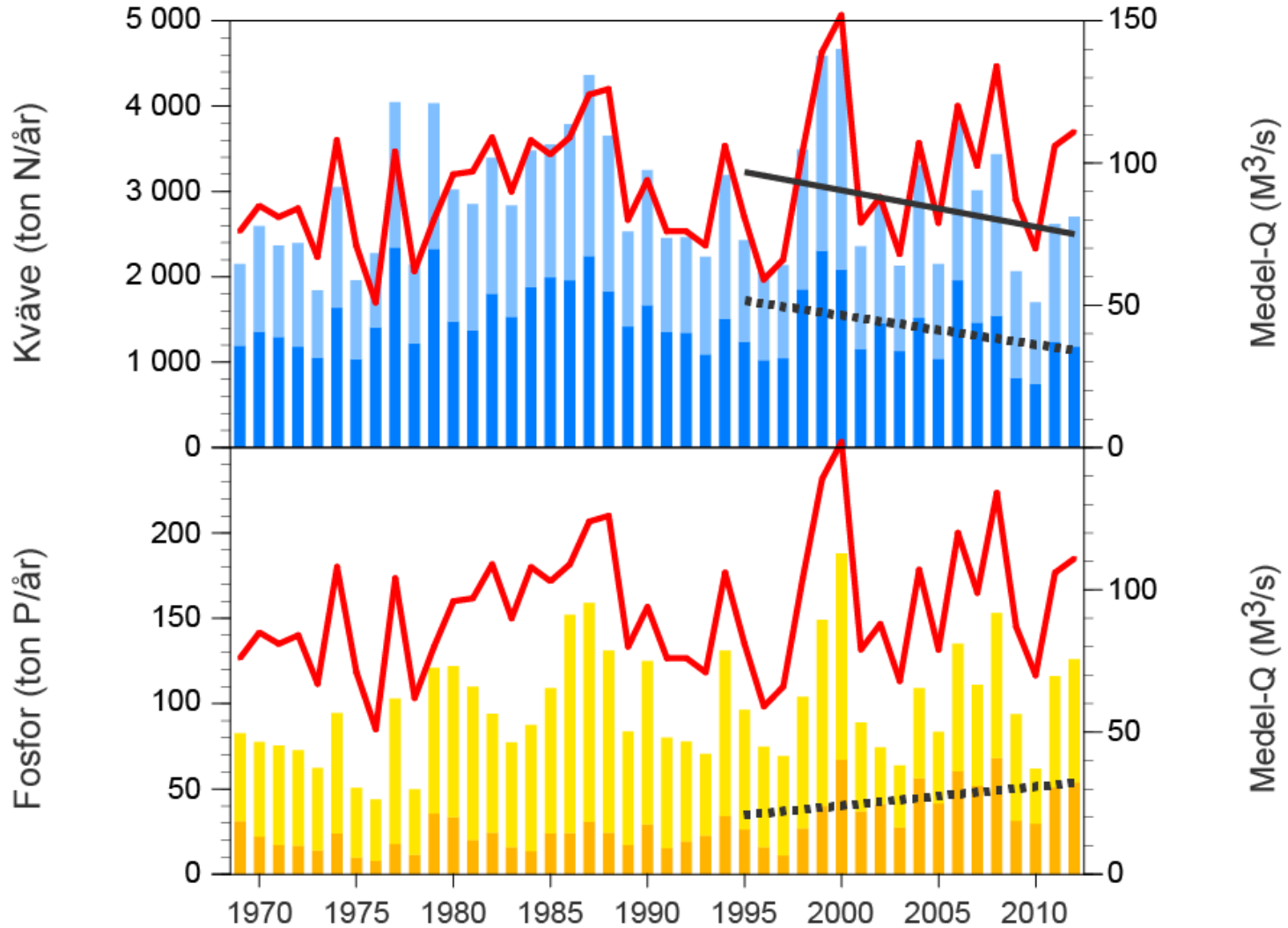


# Kattegatt 1969-2012

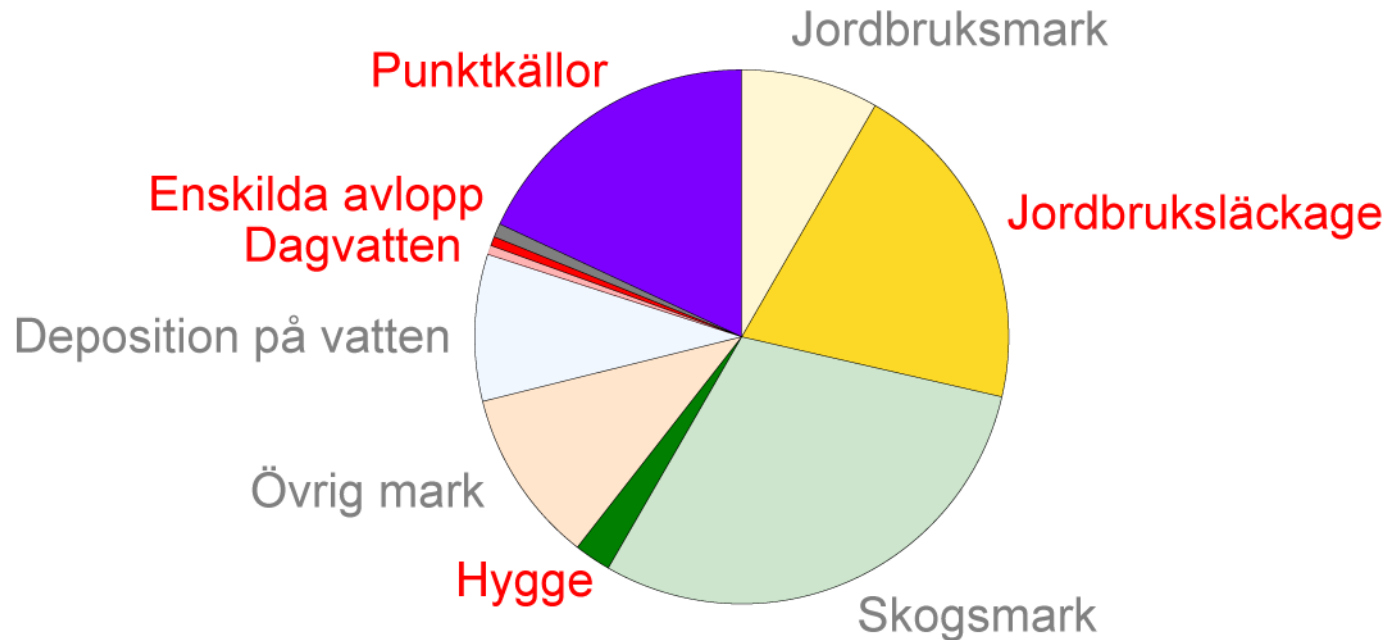




# Skagerrak 1969-2012



# Kvävekällor (SMED/PLC5)



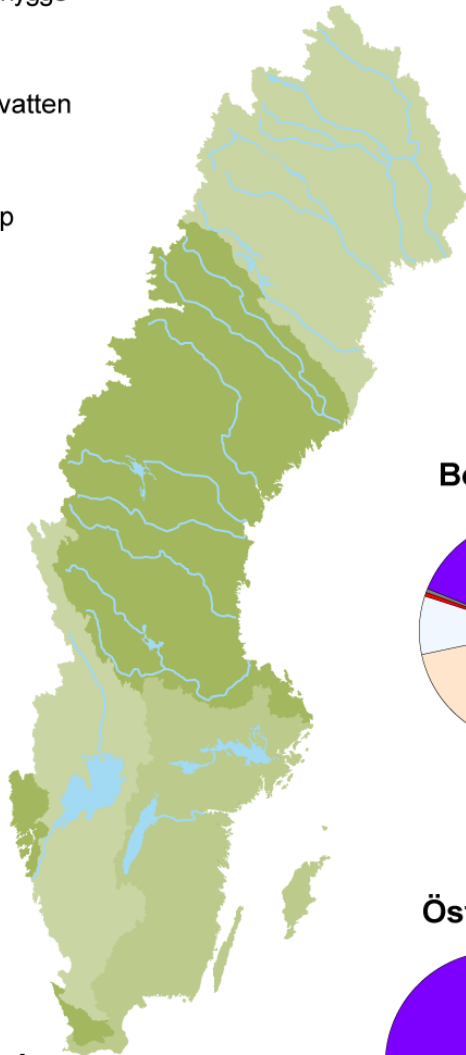
**Totalt ca 121 000 ton N/år (flödesnormerat 1985-2006)**

**Antropogent ca 61 000 ton N/år (50%)**  
(flödesnormerat 1985-2006)

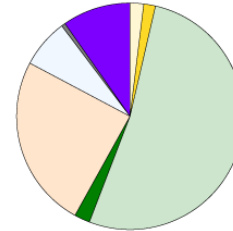
- Jordbruksmark
- Skogsmark inkl hygge
- Övrig mark
- Deposition på vatten
- Dagvatten
- Enskilda avlopp
- Punktkällor

# Kväve

(Ton N/år)

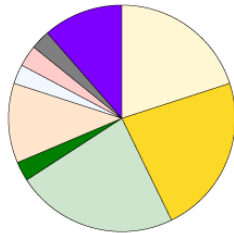


**Bottenviken**



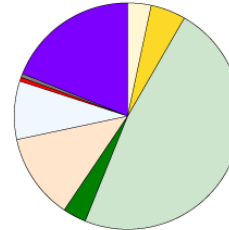
4 600 (21%)

**Skagerrak**



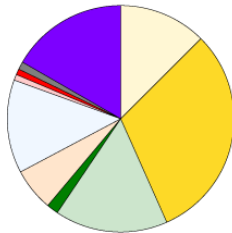
1 600 (46%)

**Bottenhavet**



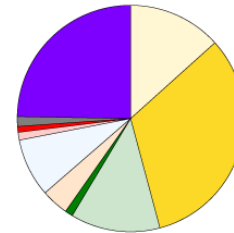
11 800 (36%)

**Kattegatt**



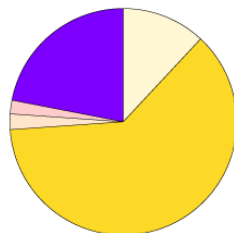
20 400 (65%)

**Östersjön**



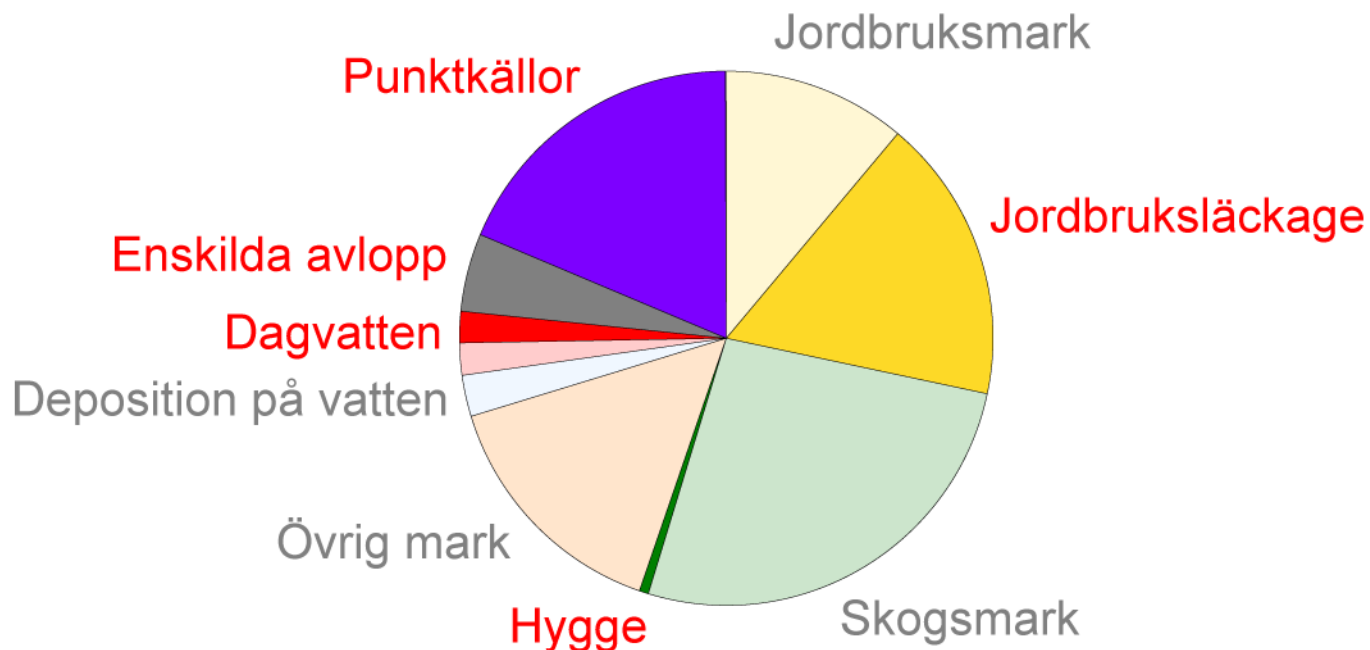
18 300 (69%)

**Öresund**



4 200 (82%)

# Fosforkällor (SMED/PLC5)



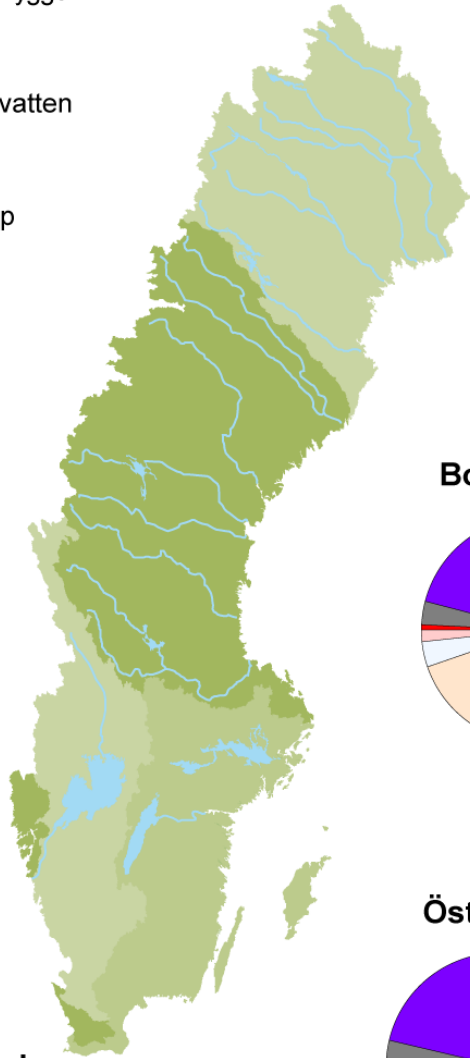
**Totalt ca 3 550 ton P/år (flödesnormerat 1985-2006)**

**Antropogent ca 1 550 ton P/år (44%)**

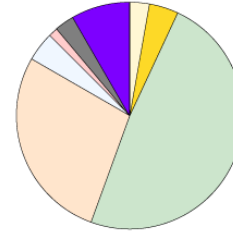
(flödesnormerat 1985-2006)

- Jordbruksmark
- Skogsmark inkl hygge
- Övrig mark
- Deposition på vatten
- Dagvatten
- Enskilda avlopp
- Punktkällor

# Fosfor (Ton P/år)

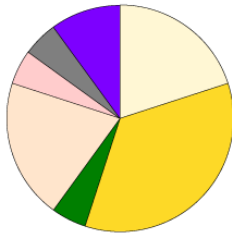


**Bottenviken**



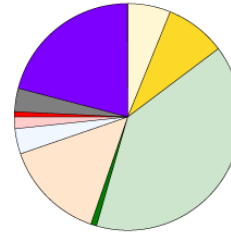
**120 (17%)**

**Skagerrak**



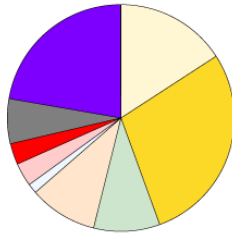
**100 (50%)**

**Bottenhavet**



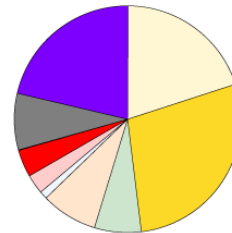
**400 (35%)**

**Kattegatt**



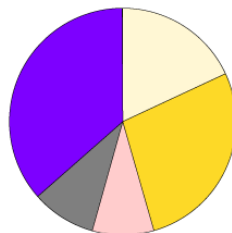
**380 (59%)**

**Östersjön**



**460 (61%)**

**Öresund**



**80 (73%)**

# Reviderade åtaganden BSAP 2013

Område	Vattenburen (1997-2003)	Reduktion	Mål	Atm.dep. (1997-2003)	Reduktion	Mål
--------	----------------------------	-----------	-----	-------------------------	-----------	-----

## Kväve

Eg.Östersjön	31 400	-6 675	24 725	7 900	-1 680	6 220
Finska viken	–	–	–	565	-65	500
Kattegat	34 000	-805	33 195	940	-25	915
TOTALT	73 300	-7 480	65 820	9 405	-1 770	7 635

## Fosfor

Eg.Östersjön	843	-530	313	–	–	–
--------------	-----	------	-----	---	---	---

# Egentliga Östersjön 1969-2012

