

On the Conditions for Developing Hunting and Fishing Tourism in Sweden

Anders Kagervall
Department of Wildlife, Fish, and
Environmental Studies

My project

- Create employment in rural areas
- Focus on family forest farms
- Use of wildlife and fish for rural development

Possible solution?



Photos: Per Ljung, Niclas Persson, Stefan Ågren

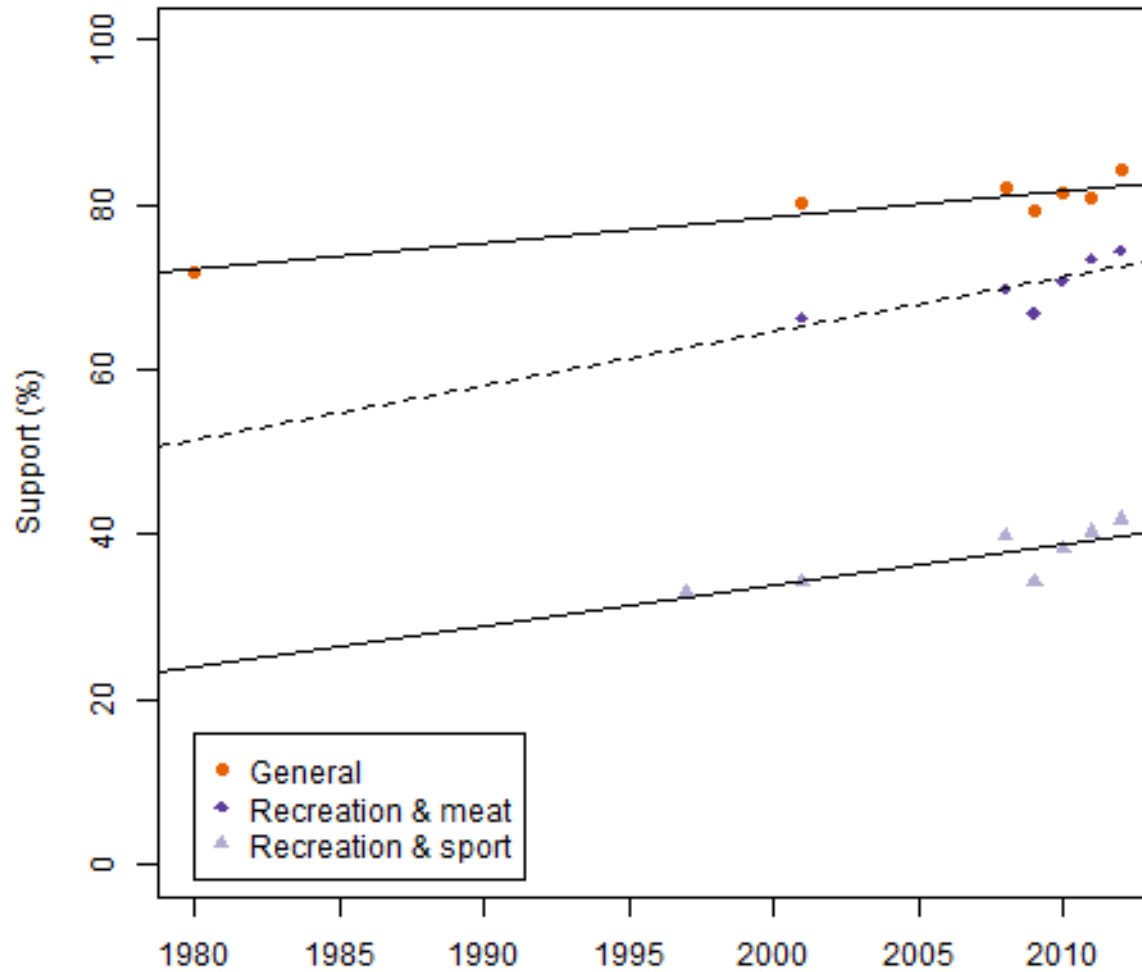
Sustainable development

- Environmental
- Economic
- Social

Objectives

1. What are the general public's attitudes toward recreational hunting and fishing in Sweden?
2. Is there a risk that the general public's attitudes will become more negative in the future?
3. What are the perceptions toward hunting and fishing tourism among rural inhabitants?
4. What are the general public's attitudes toward catch and release fishing?
5. Do recreational anglers accept catch and release as a management policy?

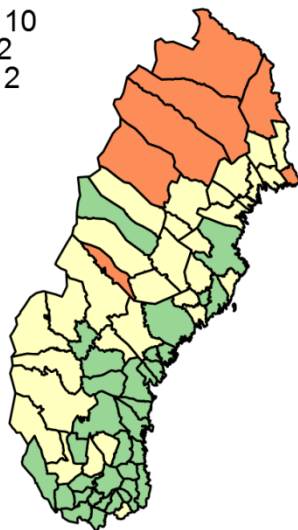
Time trend



Local residents attitudes

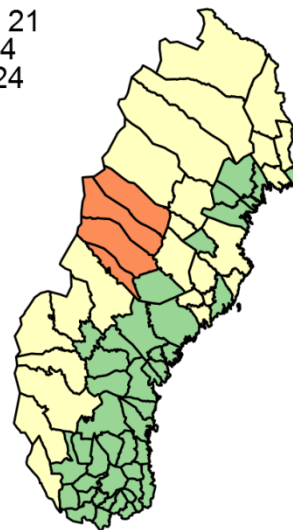
Differentiated RPA (mean score)

- under 10
- 10 - 12
- over 12



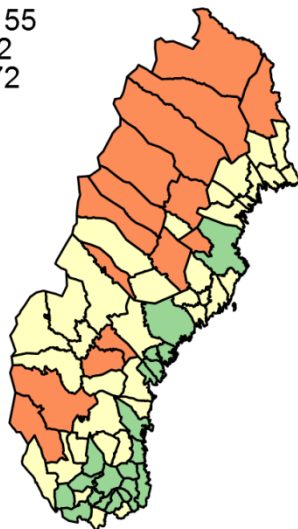
Util. use of prot. nature (mean score)

- under 21
- 21 - 24
- over 24



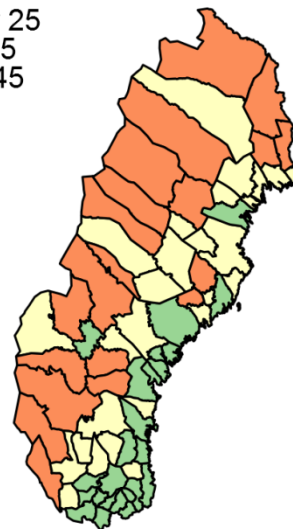
Fishing household (%)

- under 55
- 55 - 72
- over 72



Hunting household (%)

- under 25
- 25 - 45
- over 45



Catch & release (C&R) angling



- C&R can be used to have a sustainable fishing and still allow a high number of anglers
- C&R can also be controversial as it involves using animals purely for recreation

C&R norm results

	Keep all (23%)	Mixed (52%)	Release all (25%)
Characteristics	Salt water species & char Older Few days Ice fishing		Pike Younger Many days Fly fishing

Summary

- **General public**
 - High support in general
 - Stable or slightly increasing in time
 - Support drops for hunting and fishing with no utilitarian motive
- **Local residents**
 - Might perceive tourism as an intrusion
- **Recreational anglers**
 - Majority accepts at least part of their catch
 - Support for C&R is higher among younger anglers
 - Situational factor can be very important for the support (e.g. pike specialists anglers were often C&R anglers)



Acknowledgements

Many thanks to:

Göran Ericsson, main supervisor

Camilla Sandström, assistant supervisor

Co-authors:

Tom Heberlein

Gustav Hellström

Per Ljung

All anonymous survey respondents

Financiers:



EUROPEAN UNION
European Fisheries Fund
Investing in sustainable fisheries