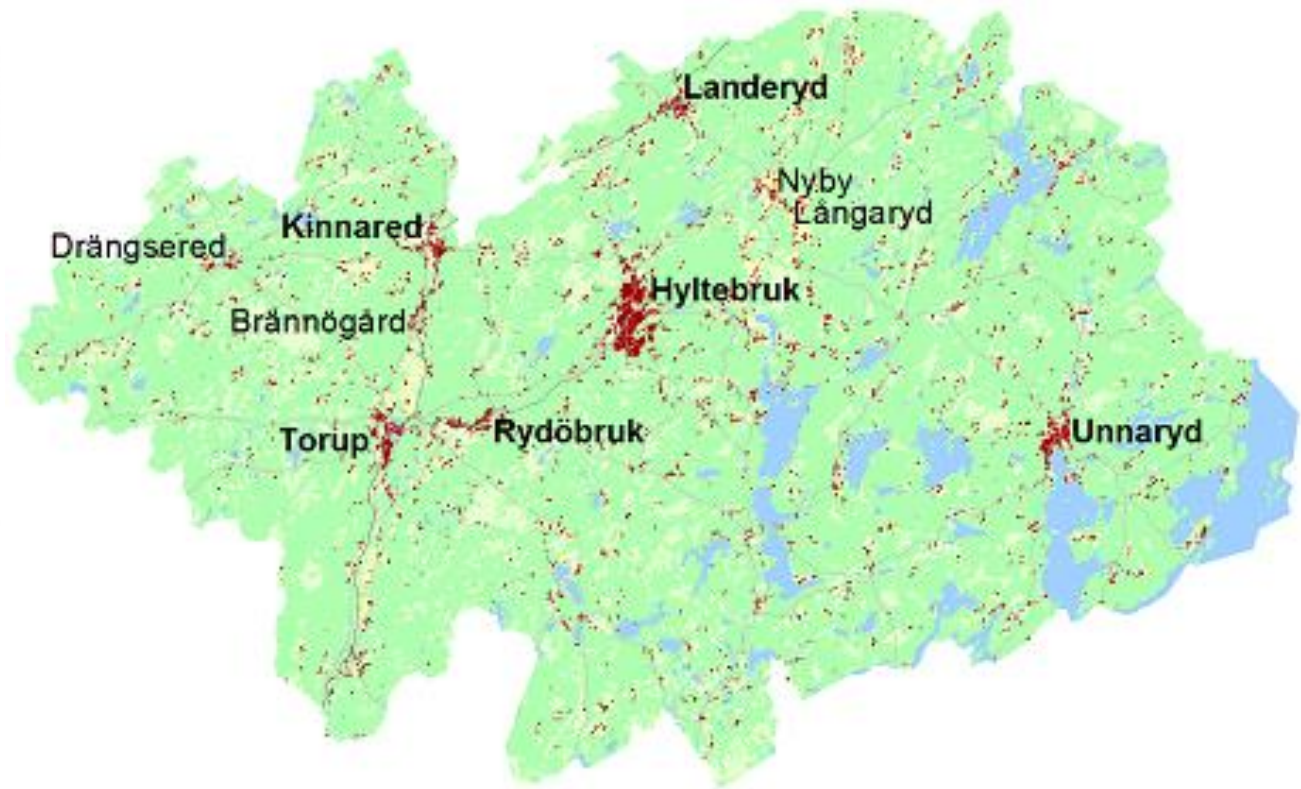


Lifestyle-migration in the parish of Unnaryd in southern Sweden

*Marion Eckardt,
Managing Director
Leader Halland*



Hylte municipality, Sweden



Europeiska jordbruksfonden för
landsbygdsutveckling: Europa
investerar i landsbygdsområden

Population in Hylte

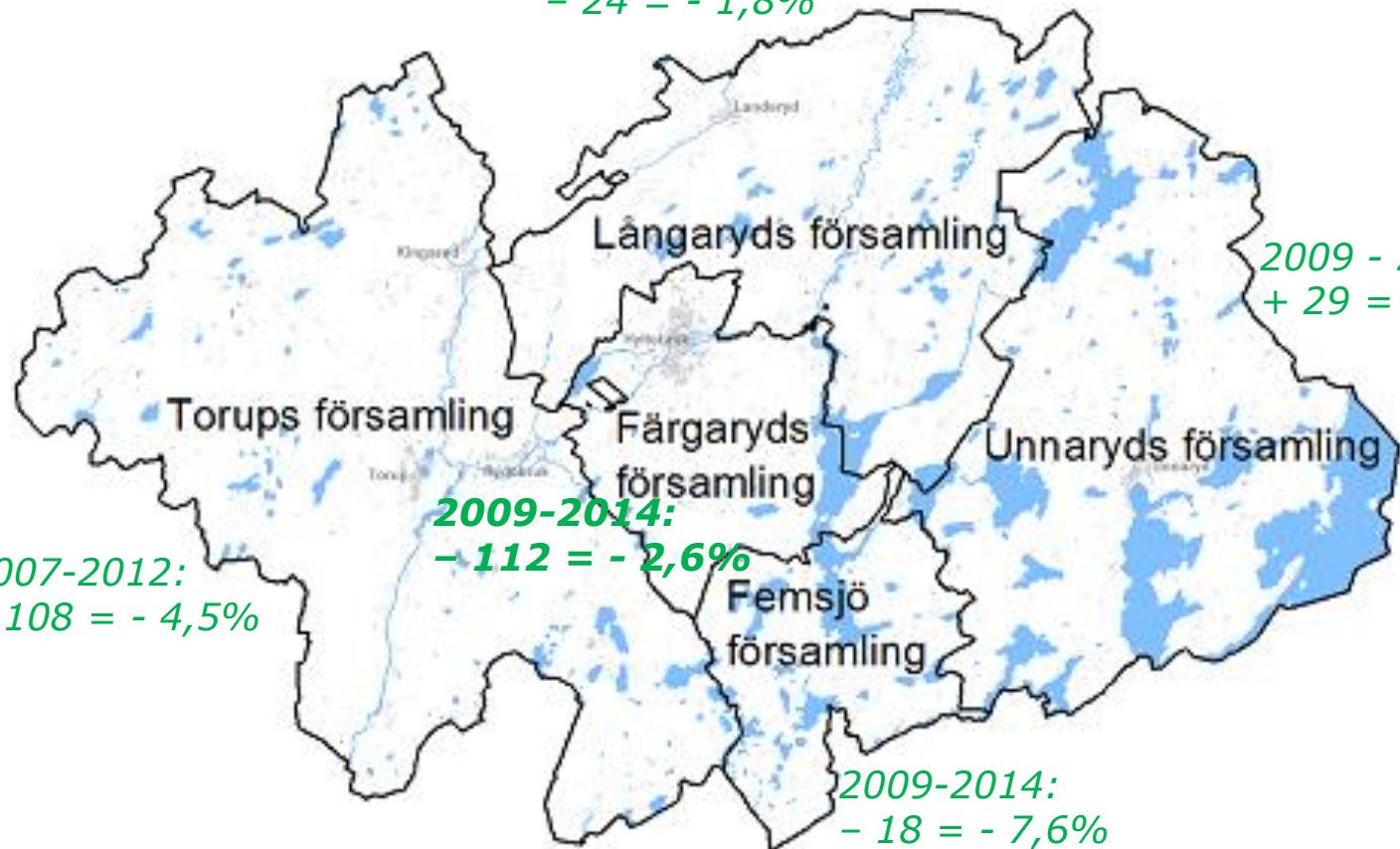
Befolkningsförändring 2003–2013

År (31/12)	Folkmängd Antal <i>population</i>	Födelse- överskott <i>Natural increase</i>	Flyttnings- överskott <i>Net migration</i>	
			Male	Kv Female
2003	10 377	-30	12	-4
2004	10 432	-8	58	5
2005	10 368	-8	-38	-17
2006	10 371	-5	7	-1
2007	10 257	18	-71	-60
2008	10 273	-16	31	-1
2009	10 277	-14	4	3
2010	10 177	-6	-45	-46
2011	10 126	-19	-6	-24
2012	10 032	-16	-30	-47
2013	10 001	-19	17	-29

2009-2013:
- 276 = - 2,7%

Same story everywhere?

2009-2014:
- 24 = - 1,8%



Inhabitants in the parish of Unnaryd

Inhabitants in the parish of Unnaryd

Date	Number inhabitants	Women	Men	Source
2006-12-31	1201	581	620	SCB
2007-12-31	1183	577	606	SCB
2008-12-31	1186	577	609	SCB
2009-12-31	1256	604	652	SCB
2010-12-31	1260	596	664	SCB
2011-12-31	1285	612	673	SCB
2012-12-31	1277	606	671	SCB
2013-12-31	1278	610	668	SCB
2014-02-04	1285			

Since 2009:
+ 29 = + 2,3%

Population i Unnaryd

Uppskattade siffror baserade på data från Skatteverket

År	Births	Mortality	Natural Increase	Immigrants	Emigrants	Net Migration
2014	2	0	2	19	-14	5
2013	11	-10	1	83	-67	16
2012	10	-23	-13	71	-66	5
2011	16	-12	4	81	-63	18
2010	12	-13	-1	76	-63	13

Who are these people??





What is so special about Unnaryd?



Europeiska jordbruksfonden för landsbygdsutveckling; Europa investerar i landsbygdsområden

Unnaryd!



What makes a move easier?

- Economic capital
 - money. Or a house.
- Social capital
 - marry. Be a soccer mom. Engage in the movements. Be family with someone.
- Cultural capital
 - Get a job. Be an artist. Have an education



What does the new settlers provide?

- International contacts
- New skills
- Volunteers for non profit organisations
- Businesses
- Vivid villagecentre