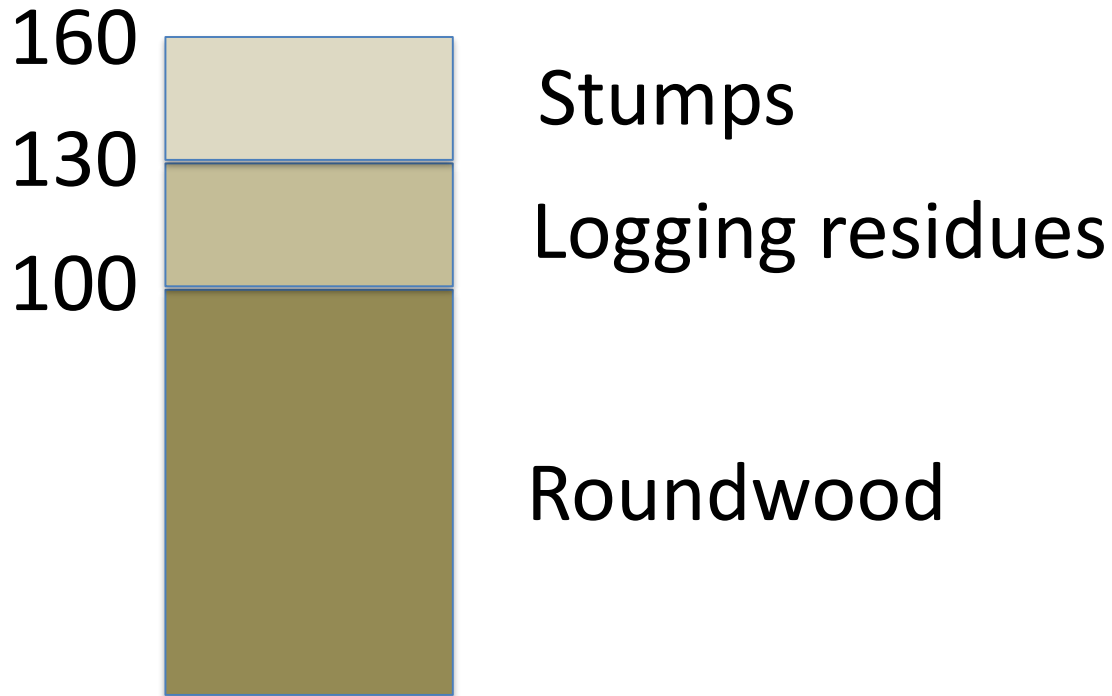
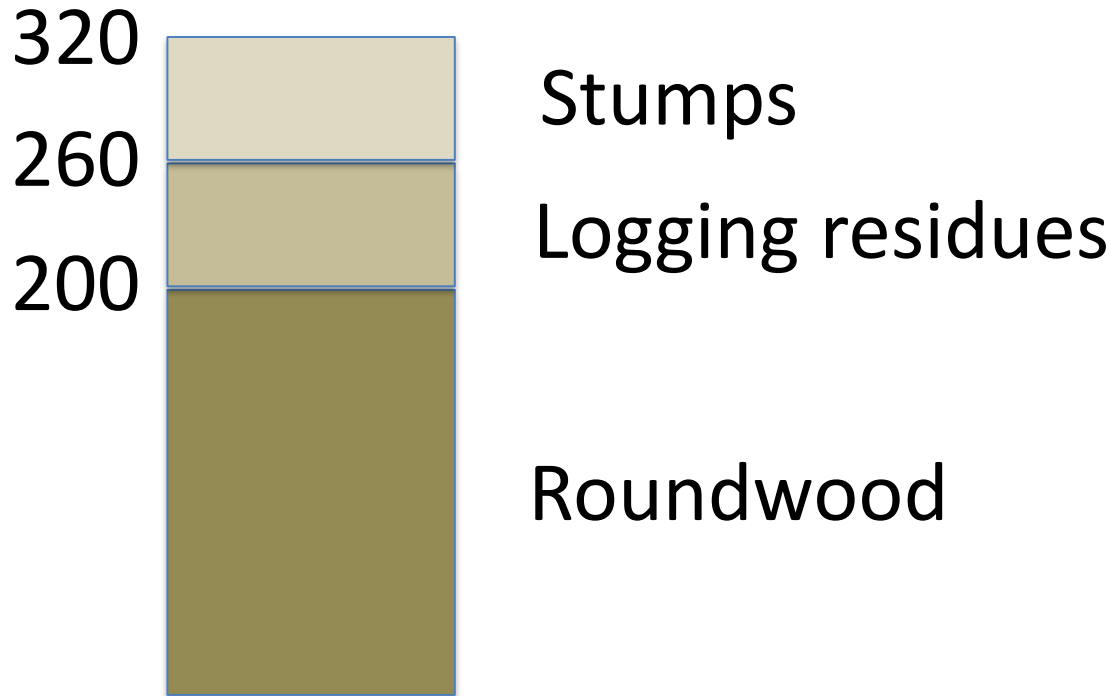


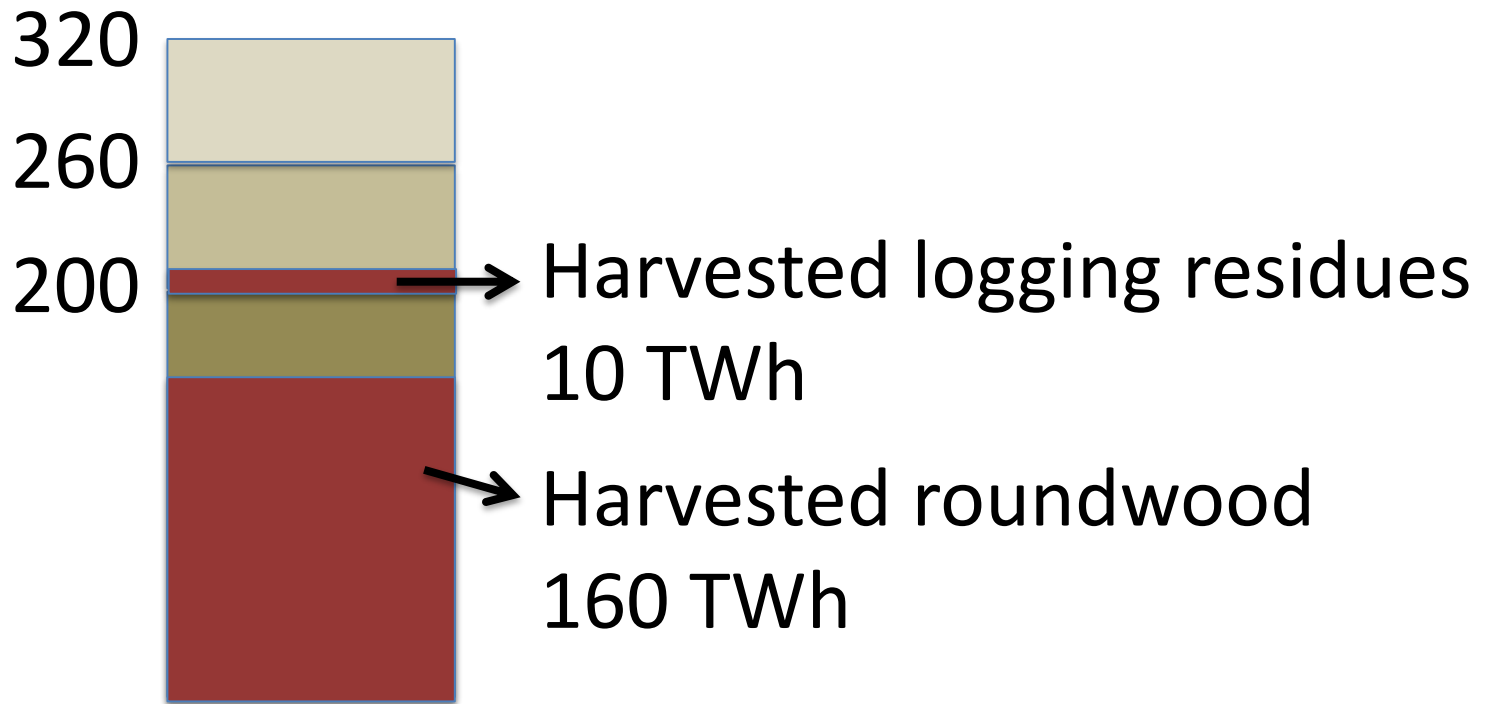
Annual growth in Swedish forests, million cubic meters (m³f)



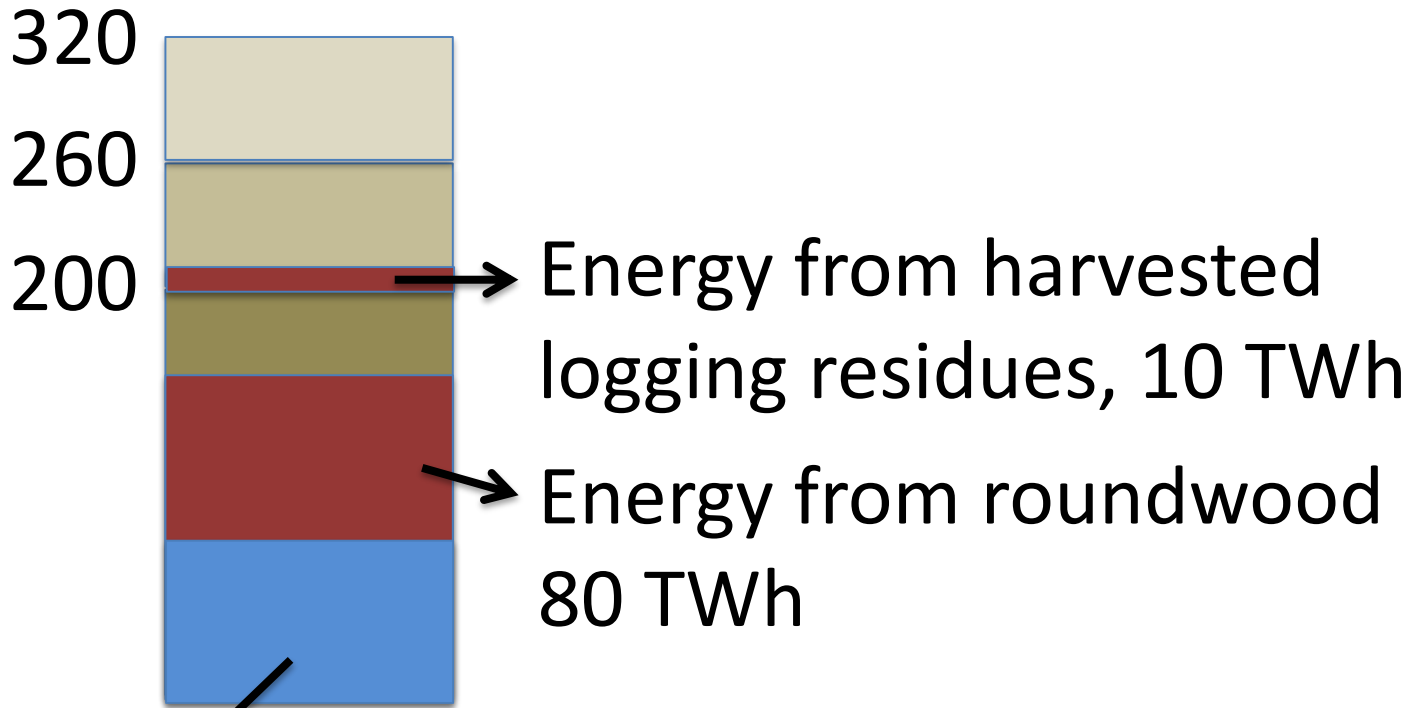
Annual growth in Swedish forests, Energy (TWh)



Annual harvest in Swedish forests, Energy (TWh)

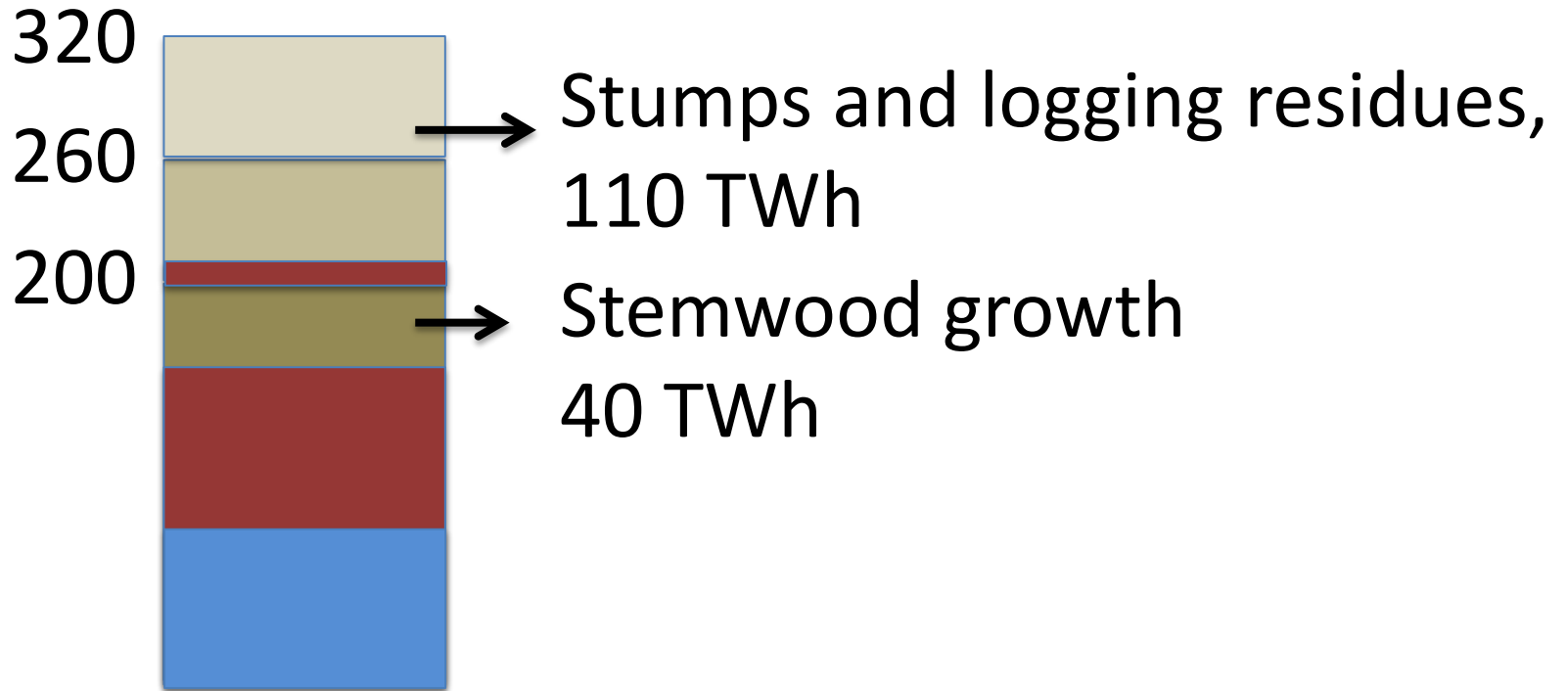


Annual harvest in Swedish forests, Energy (TWh)

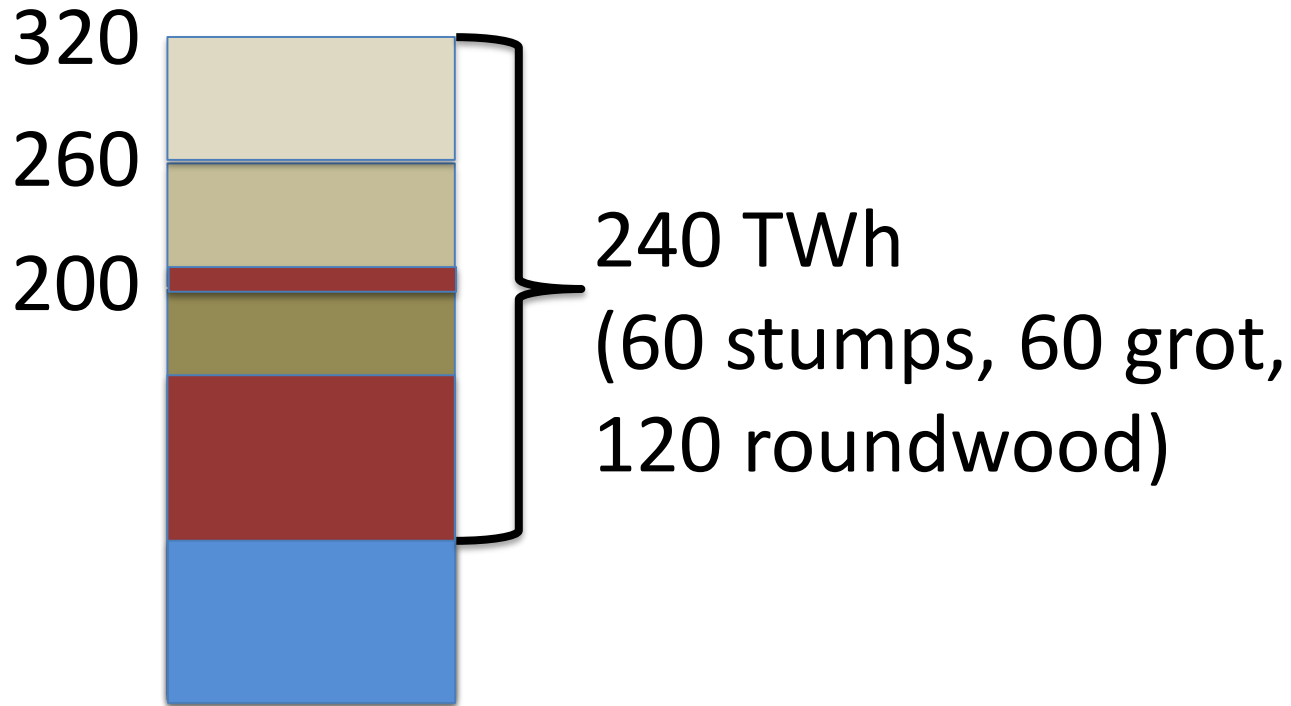


What actually becomes diapers,
planks and magazines (80 TWh)

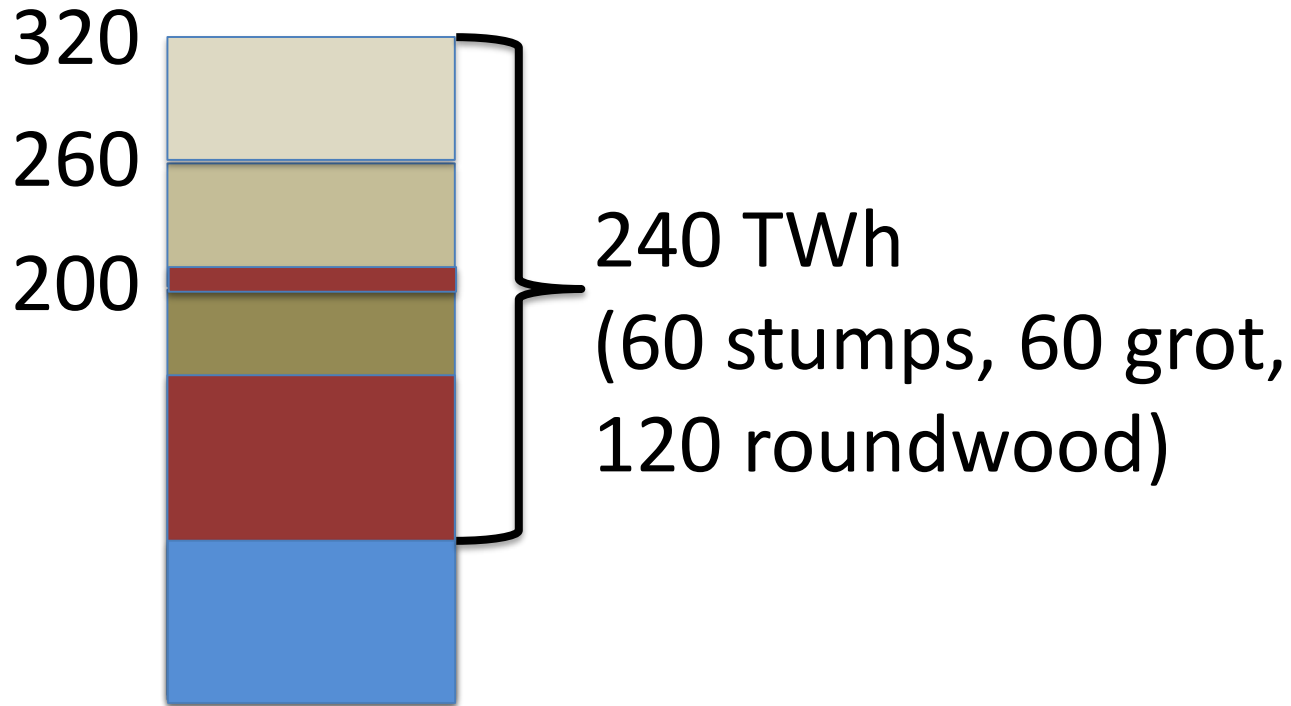
Unused potential forest energy,



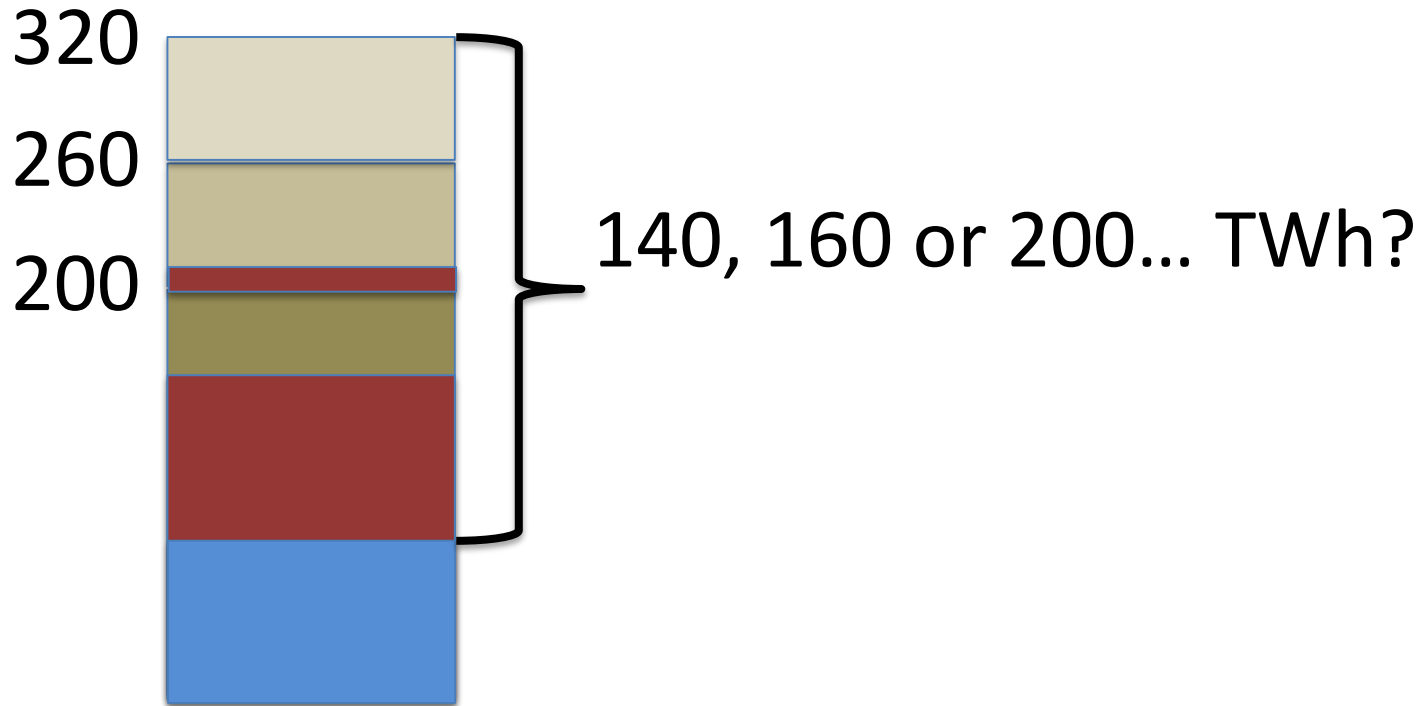
And totally available from the forest,



And totally available from the forest,

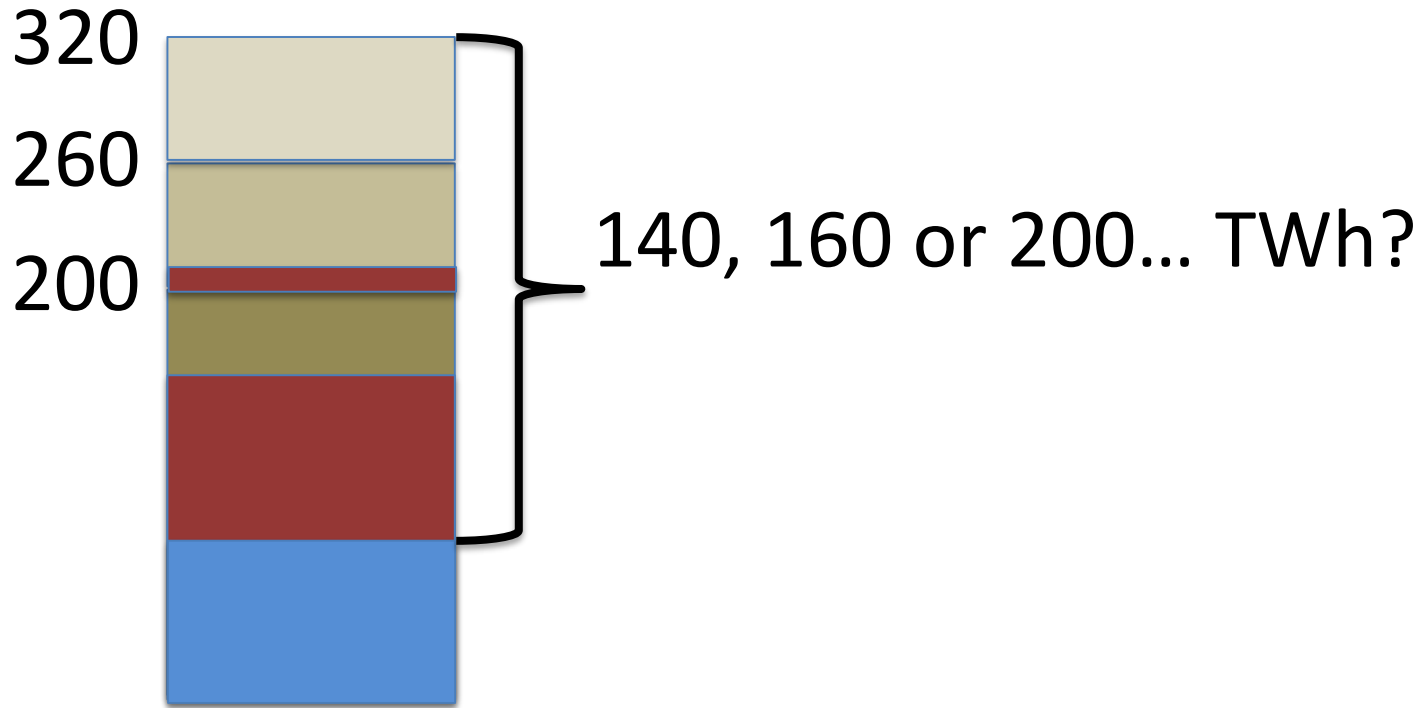


But – we cannot use all of it,
Ecological, technical, economical restrictions



Today's energy supply:

Bioenergy 130 TWh + Fossil fuels 200 TWh = 330 TWh



Will increased growth and utilization fill the gap to 2050? Do we have to make energy instead of pulp and sawtimber?